

MILLTEK

SYSTEM NO.	SSXAU939
DESCRIPTION	Cat-back
NOTES	Requires OE system to be Cut - Designed for Customers who will be upgrading to Turbo Back in the Future

PARTS REQUIRED

PART NO.	DESCRIPTION	QUANTITY	IN PACKAGE
F5150	Adaptors to OE	2	
CHC79SS	79mm Band Clamp - 304 S/S	2	
MSAU744	LH Front Silencer	1	
CHC83SS	83mm Band Clamp - 304 S/S	1	
MSAU745	RH Front Silencer	1	
CHC83SS	83mm Band Clamp - 304 S/S	1	
MSAU746	Active Valved Centre Section	1	
CHC83SS	83mm Band Clamp - 304 S/S	2	
F20465	8mm Aluminium Spacer	2	
F20466	8mm Aluminium Spacer	2	
F20467	8mm Aluminium Spacer	1	
MSWL005	Wiring Loom - Electronic Valve	1	
^^^ACTUATOR AND SPRING MUST BE ATTACHED TO PART^^^			
MSAU747	LH Connecting Pipe	1	
CHC83SS	83mm Band Clamp - 304 S/S	1	
MSAU748	RH Connecting Pipe	1	
CHC83SS	83mm Band Clamp - 304 S/S	1	
MSAU749	LH Rear Section	1	
CHC83SS	83mm Band Clamp - 304 S/S	1	
MSAU750	RH Rear Section	1	
CHC83SS	83mm Band Clamp - 304 S/S	1	
MSAU751	Valved Outlet Pipes	2	
CHC79SS	79mm Band Clamp - 304 S/S	2	
M6NYLOC	M6 Nyloc Nutbzp	6	
MSTIP271	LH Cerakote Black Oval Trim	1	
F3043	Aluminium Spacer	1	
M8BZPFLNUT	M8 Bzp Flange Nut Serrated Only	1	

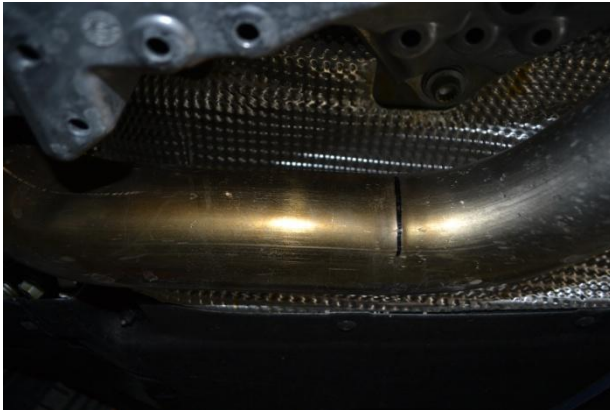
MILLTEK

MSTIP272	RH Cerakote Black Oval Trim	1	
8MMWASHER	8mm Flat Washer Bzp	1	
M8BZPFLNUT	M8 Bzp Flange Nut Serrated Only	2	
M8X16BZP	M8X16mm Bzp Set Screw-Zinc Pl.	1	

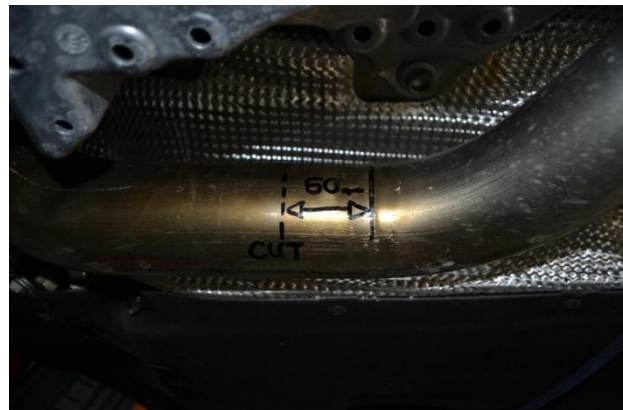
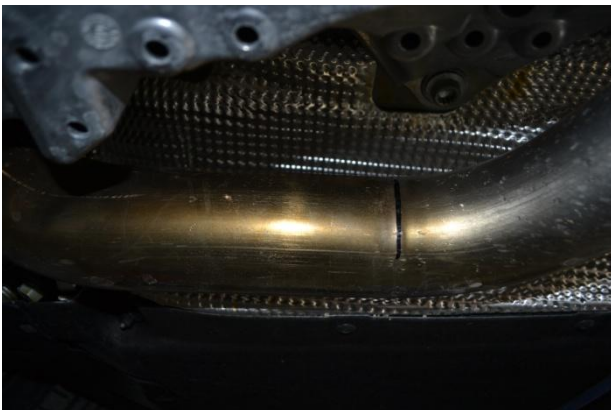
TECHNICAL INFORMATION

NOTES	Requires OE system to be Cut - Designed for Customers who will be upgrading to Turbo Back in the Future
-------	---

LH SIDE CUTTING DETAILS



RH SIDE CUTTING DETAILS



MILLTEK