

MILLTEK

SYSTEM NO.	SSXAU1050
DESCRIPTION	Cat-back
NOTES	

PARTS REQUIRED

PART NO.	DESCRIPTION	QUANTITY	IN PACKAGE
MSAU744REP	LH Front Silencer Bypass	1	
CHC83SS	83mm Band Clamp - 304 S/S	1	
MSAU745REP	Rh Front Silencer Bypass	1	
CHC83SS	83mm Band Clamp - 304 S/S	1	
MSAU746	Active Valved Centre Section	1	
CHC83SS	83mm Band Clamp - 304 S/S	2	
F20465	8mm Aluminium Spacer	2	
F20466	8mm Aluminium Spacer	2	
F20467	8mm Aluminium Spacer	1	
MSWL005	Wiring Loom - Electronic Valve	1	
^^^ACTUATOR AND SPRING MUST BE ATTACHED TO PART^^^			
MSAU770	LH Connecting Pipe to OE Downpipe Flange	1	
MSAU771	RH Connecting Pipe to OE Downpipe Flange	1	
MSSAU100	LH Connecting Pipe	1	
CHC83SS	83mm Band Clamp - 304 S/S	1	
MSSAU101	RH Connecting Pipe	1	
CHC83SS	83mm Band Clamp - 304 S/S	1	
MSSAU102	LH Rear Silencer	1	
CHC83SS	83mm Band Clamp - 304 S/S	1	
MSSAU103	RH Rear Silencer	1	
CHC83SS	83mm Band Clamp - 304 S/S	1	
MSSAU104	Cast Titanium Valved Outlet	2	
ACTUATOR01	Electronic Actuator MOO-33	2	
CHC79SS	79mm Band Clamp - 304 S/S	2	
SPRING04	Spring For Exhaust Valve	2	
^^^ACTUATOR AND SPRING MUST BE ATTACHED TO PART^^^			
MSTIP269	LH Polished Oval Trim	1	
F3043	Aluminium Spacer	1	

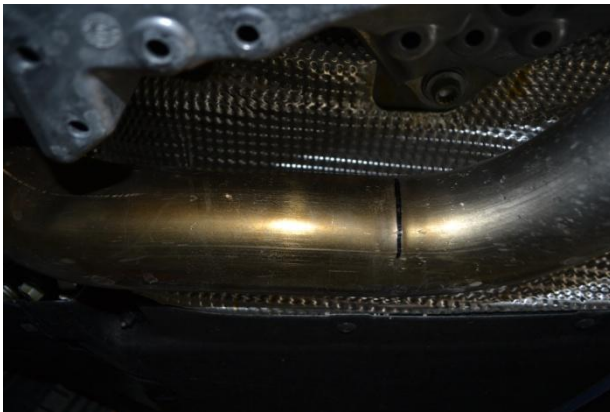
MILLTEK

M8BZPFLNUT	M8 Bzp Flange Nut Serrated Only	1	
MSTIP270	RH Polished Oval Trim	1	
8MMWASHER	8mm Flat Washer Bzp	1	
M8BZPFLNUT	M8 Bzp Flange Nut Serrated Only	2	
M8X16BZP	M8X16mm Bzp Set Screw-Zinc Pl.	1	

TECHNICAL INFORMATION

NOTES	OE Exhaust Requires Cutting – See images below
-------	--

LH SIDE CUTTING DETAILS



RH SIDE CUTTING DETAILS

