



## AUDI S5 3.0TFSI BOOST TAP

### INSTALLATION INSTRUCTIONS



The Forge billet boost tap allows the fitment of an aftermarket boost gauge to the supercharger system on the Audi 3.0TFSI engine. This allows boost level to be monitored while on the move and while tuning on the dyno.

Please thoroughly read through and familiarize yourself with these instructions in their entirety prior to beginning any part of the installation process of any component. Please also ensure the vehicle and engine has cooled down sufficiently to avoid risking possible skin burns or other injury.

Safety eyewear, footwear, gloves and protective clothing are also recommended.

**Engineered for performance**

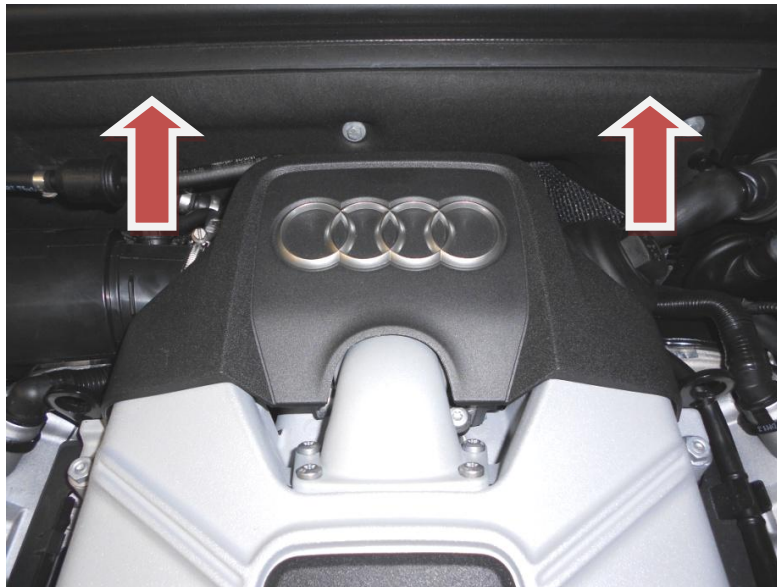
## Tools Required:

- T30 Torx
- Suitable silicone lubricant.

1. Open and secure the bonnet.

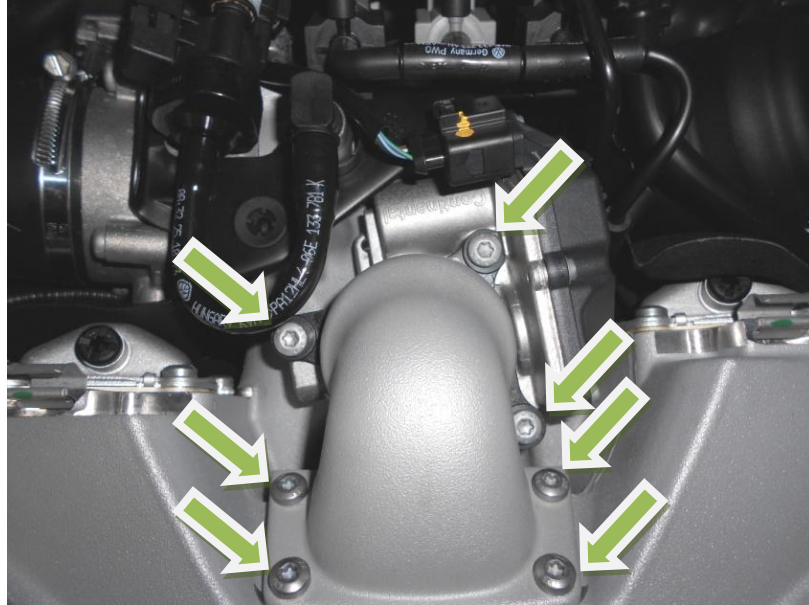


2. At the back on the engine carefully pull the plastic cover upwards.

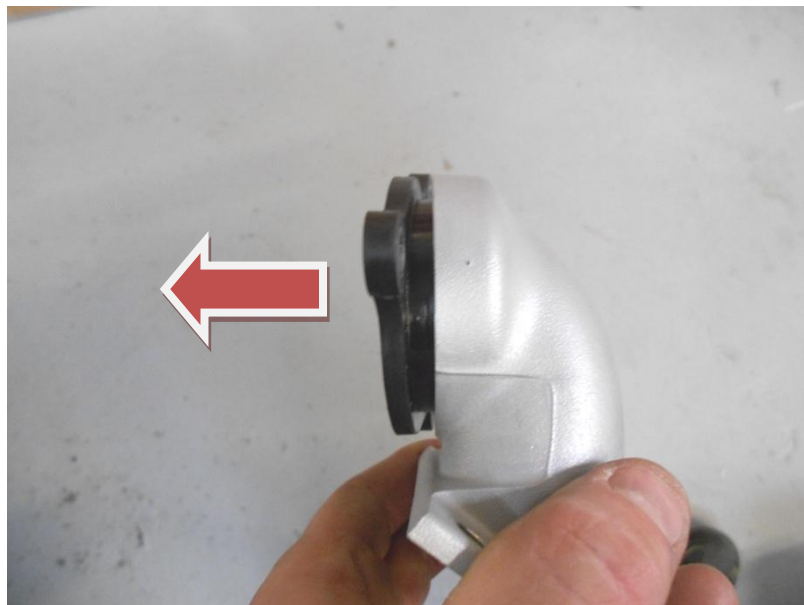


Engineered for performance

3. Undo 7x T30 Torx bolts



4. Carefully remove the cast aluminium elbow and plastic flange. Cover both openings to prevent foreign objects from falling in to the engine.
5. Twist and pull the lower flange out of the cast aluminium elbow.

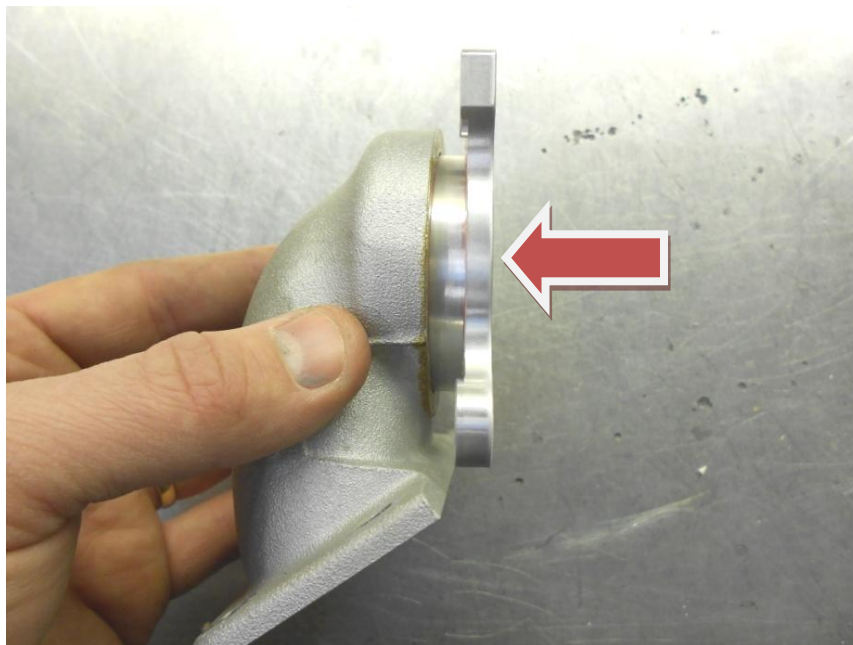


Engineered for performance

6. Lubricate the internal O-ring inside the cast elbow.

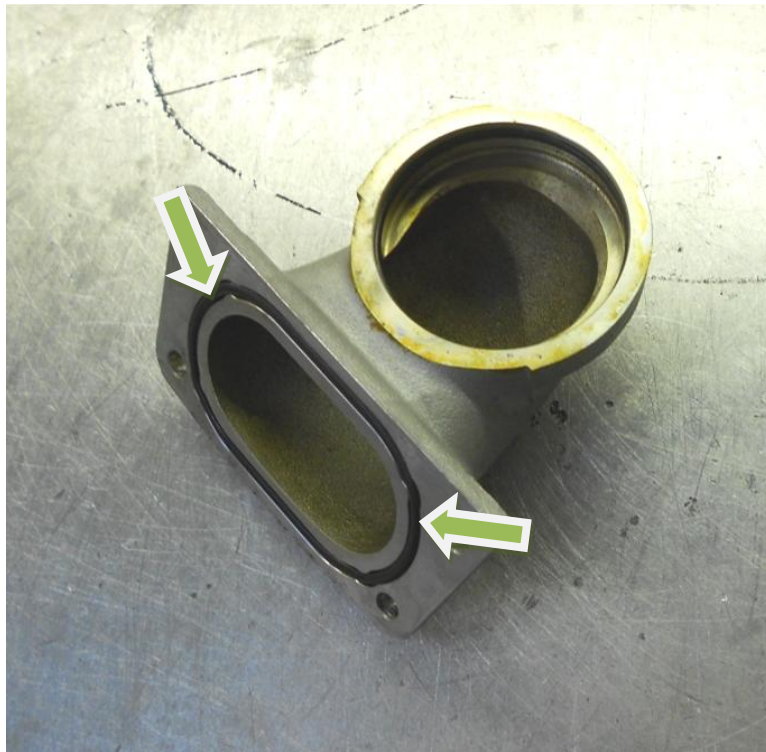
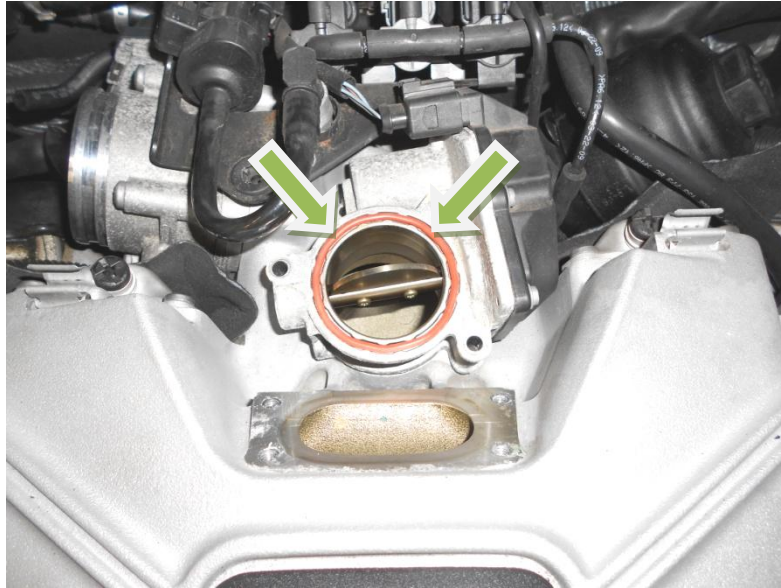


7. Push the Forge Boost Tap squarely into cast elbow.



Engineered for performance

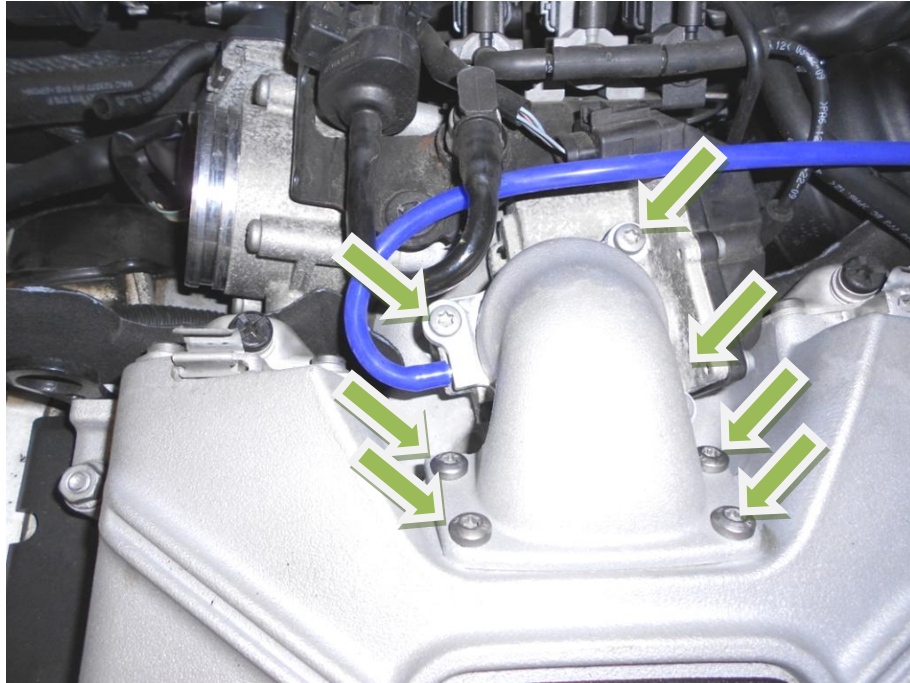
8. Ensure the O-rings in both the cast elbow and bypass valve are seated correctly.



9. Test fit the cast elbow and boost tap without bolts to correctly align the holes in the cast elbow and billet boost tap.

**Engineered for performance**

10. Using the original Torx bolts secure the cast elbow and billet boost tap in position.



11. Your installation should now be complete.



Engineered for performance