

**034 MOTORSPORT**

034Motorsport's X-Clear driveshaft tunnel brace is designed to substantially increase rigidity over the factory unit, while adding additional clearance for aftermarket exhaust components.

Installation Spiciness Rating: MILD



Installation of your 034Motorsport X-Clear Brace is a straightforward process that will take approximately 30 minutes to complete.

**Supplied Parts:**

- 034 X-Clear Driveshaft Tunnel Brace
- (2x) M6x14mm Bolts
- (2x) M6x25mm Washers

**Tools Needed:**

- 12mm Triple-square Socket
- 10mm Socket
- 4mm Allen bit
- Torque wrench

About This Guide

This Install Guide documents the installation process on a C7.5 Audi S6. There may be minor differences depending on specific vehicle, market, options, etc.

Getting Started

Confirm you have received all the parts included with your purchase by reading the complete guide, if there are missing components, please contact:

**\*Exhaust pipes may be hot! Let them cool off before starting the installation.**

### Install Steps

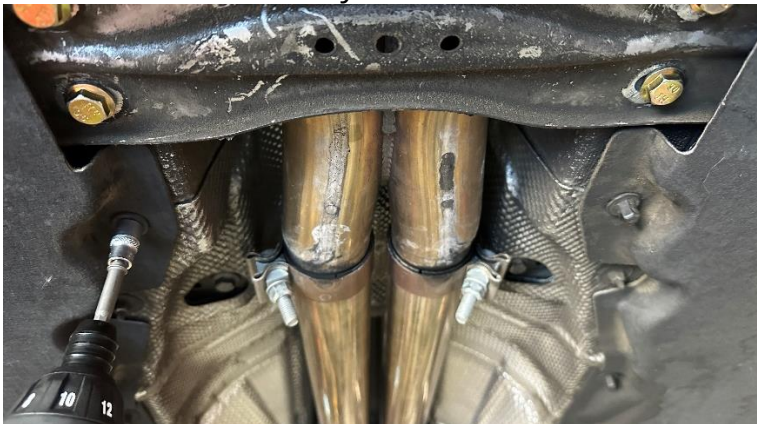
#### Step 1

Lift the car to gain access to the underside.



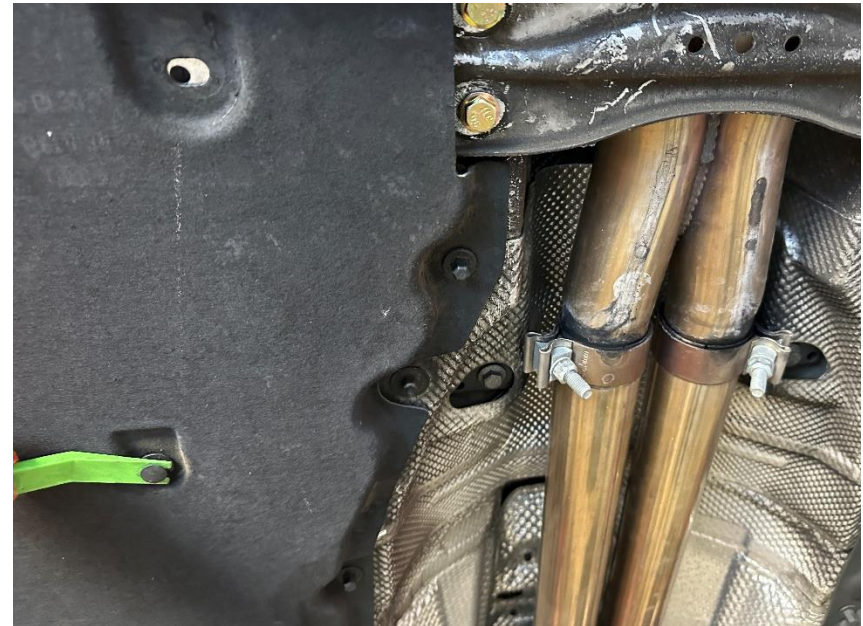
#### Step 2

Using a 10mm socket, remove the bellypan hardware near the factory chassis brace.



#### Step 3

Using a trim removal tool, remove the push-clips from the bellypan.





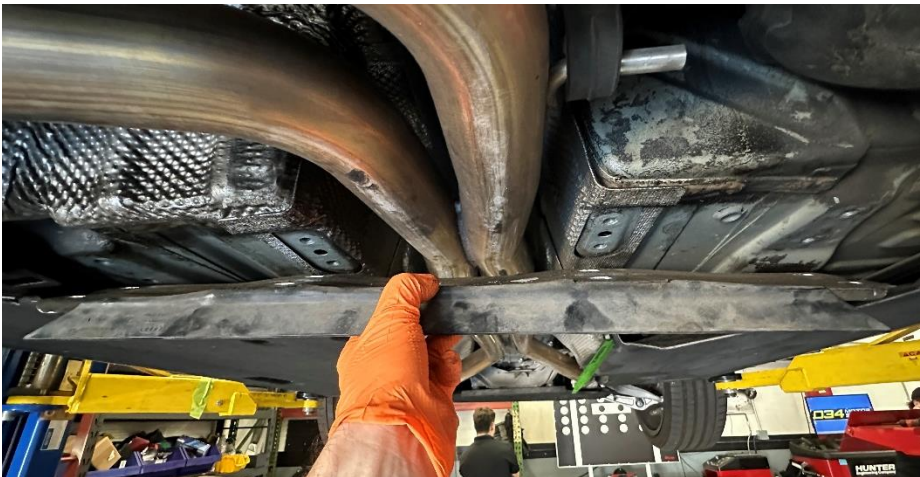
#### Step 4

Using an M10 Triple-square, remove the factory hardware securing the chassis brace to the chassis.  
(Non-OE hardware shown in picture)



#### Step 5

Remove the factory chassis brace.



#### Step 6

Reusing the stock hardware, install the 034 X-Clear.  
Torque to **55 Nm**.



#### Step 7

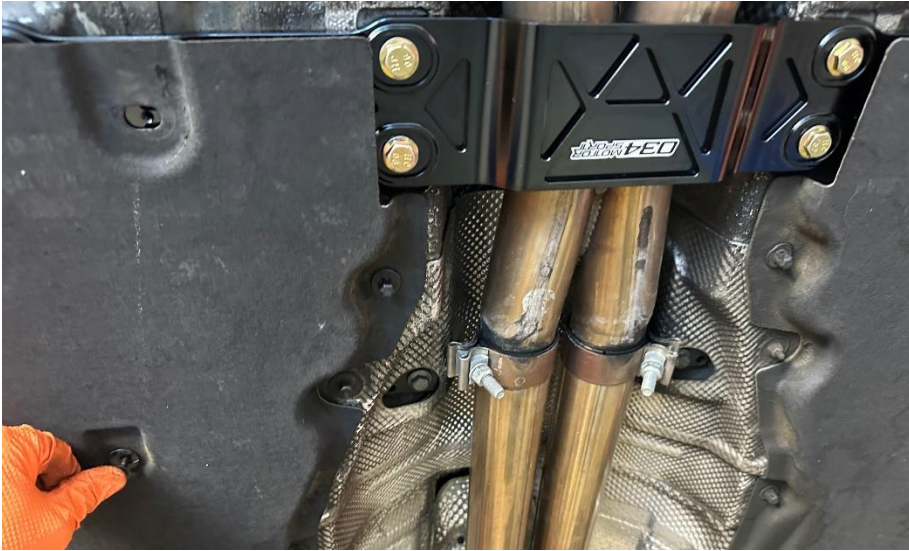
Using a 10mm socket, reinstall the bellypan hardware.





**Step 8**

Reinstall the push-clips for the bellypan.

**Step 9**

Using a 4mm Allen, secure the bellypan to the X-Clear with the provided hardware.

**Step 10**

Stand back and appreciate all the rigidity and exhaust pipe clearance you now have.





## Step 11

Lower the car back down and enjoy!

