

MQB Density Line Camster Increasing Strut Mount**034 MOTORSPORT**

034Motorsport's new MQB Camber-Caster Increasing Strut Mounts are a complete drop-in replacement CNC-machined from 6061-T6 aluminum for added durability. These strut mounts include proprietary 75 durometer rubber inner pucks that are fully rebuildable. Dial in your stance with the 1.5° of additional negative camber and 1.0° of additional caster for the optimal contact with the road.

Installation Spiciness Rating: MEDIUM

Installation of your 034Motorsport Camber-Caster Increasing Strut Mounts is a straightforward process that will take approximately 3 hours to complete.

Supplied Parts:

- (1x) Right-side Camber-Caster Strut Mount assembly
- (1x) Left-side Camber-Caster Strut Mount assembly
- (6x) Strut Mount bolts

Tools Needed:

- T27 Torx Bit
- E18 Socket
- E16 Socket
- 13mm Socket
- Flat-Head Screwdriver
- Pole Jack

Getting Started

Confirm you have received all the parts included with your purchase by reading the complete guide, if there are missing components, please contact:

customerservice@034motorsport.com

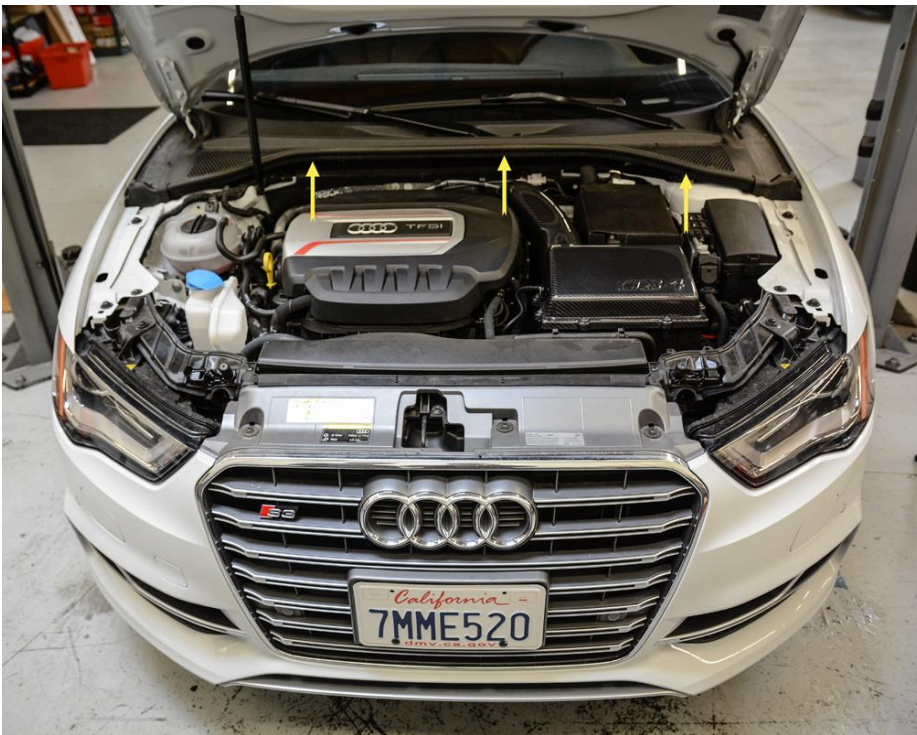
About This Guide

This Install Guide documents the installation process on an 8V Audi S3 and a Mk8 VW GTI. There may be minor differences depending on specific vehicle, market, options, etc.

Install Steps

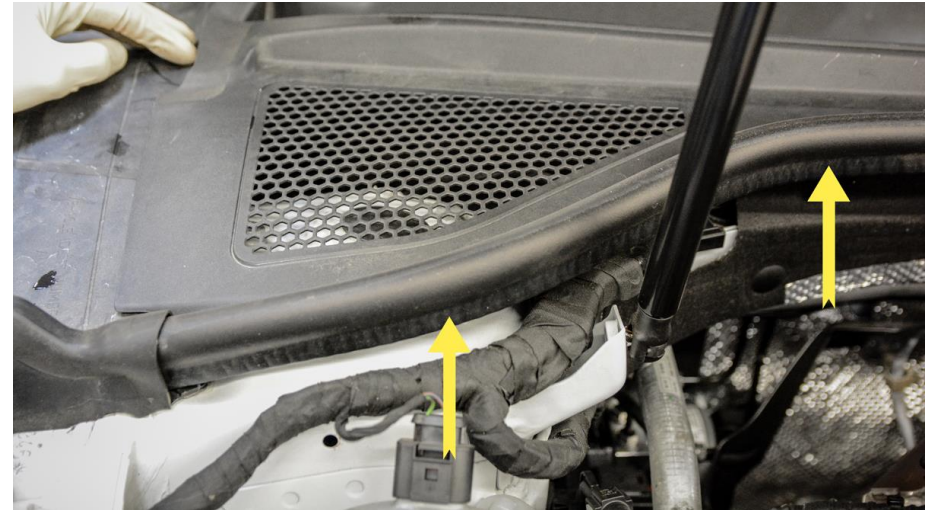
Step 1

Raise the vehicle securely on jackstands or a lift, to gain access to the front suspension and the strut tower under the hood.



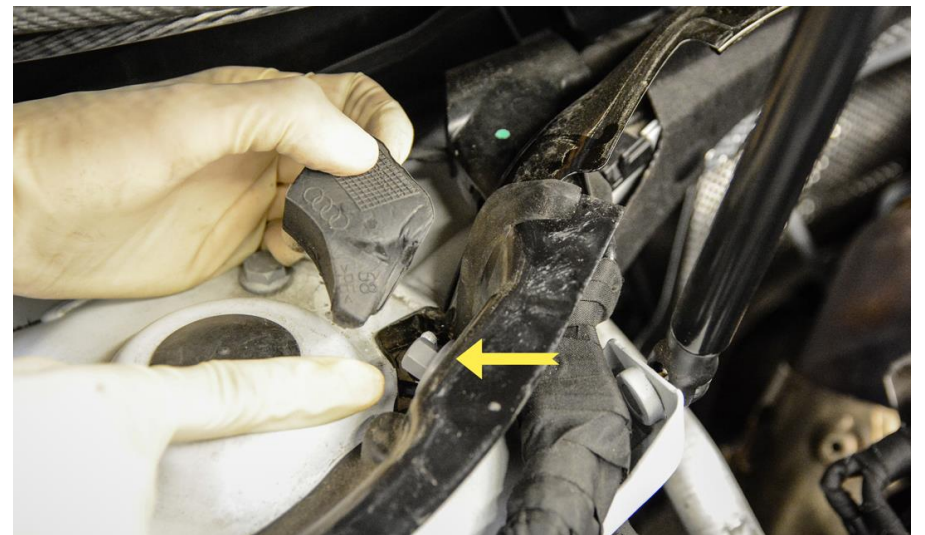
Step 2

Remove the rubber weather stripping from the cowl cover.



Step 3

With the weather stripping removed and the plastic cowl cover lifted, locate the bolt securing the dust shield to the strut tower.



Step 4

Using a 10mm Socket, remove the bolt securing the cowl dust shield to the strut tower.

**Step 5**

With the dust shield out of the way, you'll notice the easy access to the 3 strut mount bolts for later.

**Step 6**

Remove front wheels to gain access to lower strut.

**Step 7 (Optional)**

If car is equipped with factory dynamic suspension, disconnect plastic clip located on the bottom of the strut.



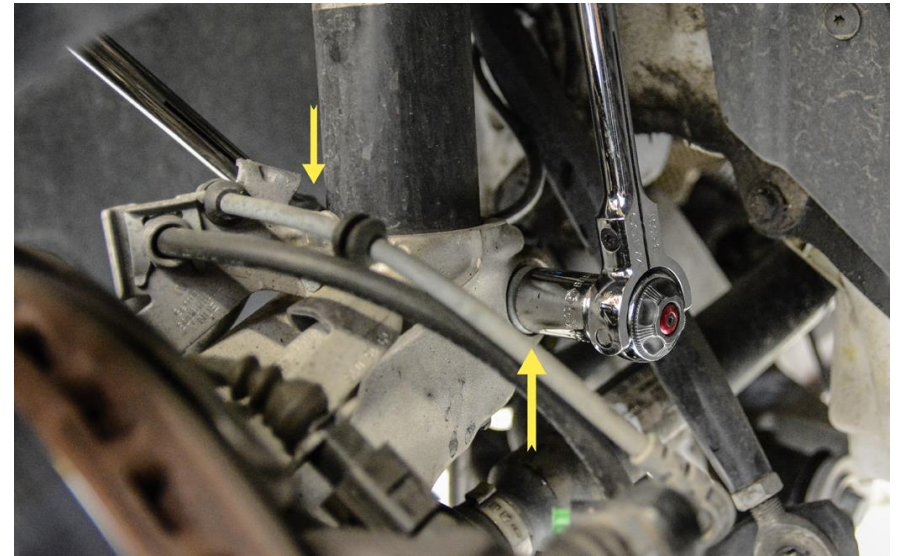
Step 8

Remove upper nut from front sway bar end link, located on bracket below spring perch of strut assembly. (If aftermarket sway bar end links have been installed, new hardware may have been supplied and will differ from factory pieces.)

Tip: Remove upper sway bar end link nuts from both sides of the vehicle for added compliance when removing strut assembly.

**Step 9**

Locate the bolt clamping bottom of the strut to the knuckle. Use a 14mm Triple Square and 18mm Socket to remove the nut and bolt from the knuckle assembly.

**Step 10**

Once lower strut bolt and nut are removed, use a Spreader Socket to separate the strut housing from the lower knuckle.

Spreader Socket pictured below.



Step 10 cont.**Step 11**

Use a 13mm Socket to remove the strut mount bolts.

**Step 12**

Use spring compressors to remove any spring tension from the upper spring hat. Safely remove the strut mount. Use a 21mm (or 13/16") Spark Plug Socket and 7mm Allen to remove the upper strut nut.



Step 13

Remove soft, factory strut mounts and throw away in the garbage.



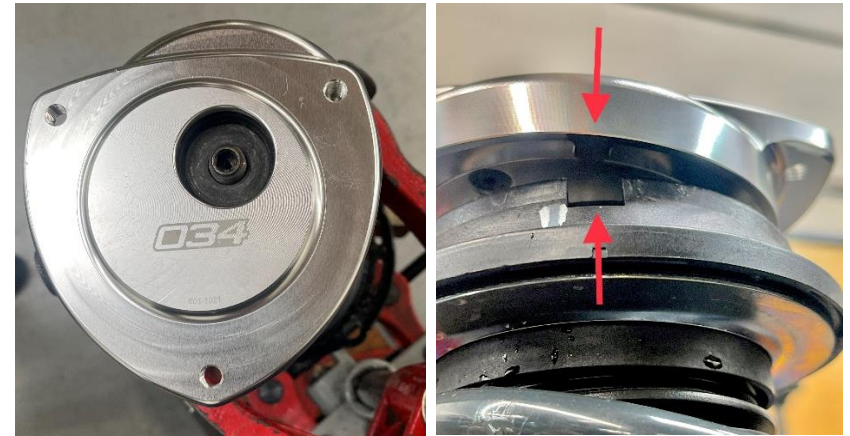
Step 14

The window to access the upper strut nut will lean towards the windshield once installed.



Step 15

Install new 034 Camber-Caster Strut Mounts and, if desired, new Strut Bearings. Locate tab on strut mount and align with recess in upper spring perch.



Step 16

Once all mounting tabs are aligned, install upper strut nut using a 21mm (or 13/16" Standard) Spark Plug Socket and 7mm Allen. Torque upper strut nut to **60Nm**. Important: For proper installation, the upper strut mount tabs must align with the tab on lower strut body.



Step 17

Reinstall the strut assembly and loosely thread the upper 3 strut bolts into strut mount.



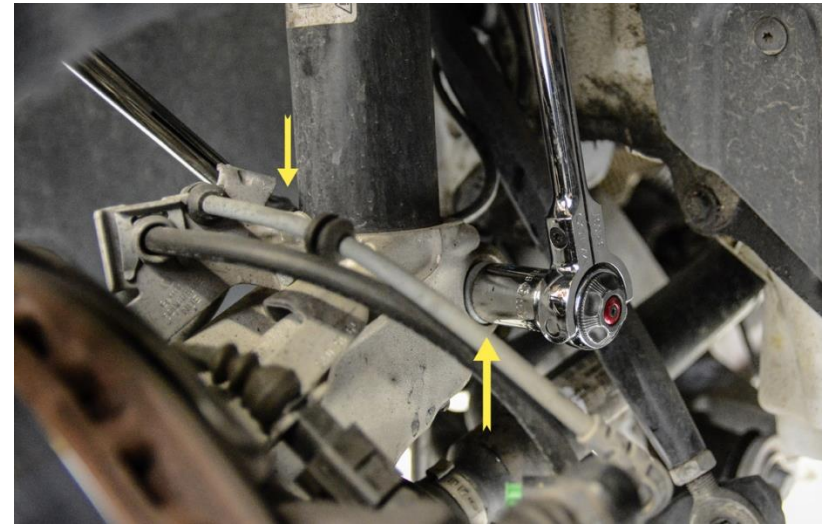
(MK8 VW GTI shown here)

Step 18

Slide lower strut tube into knuckle. Tip: Use a floor jack to apply pressure under lower knuckle and ease installment of strut into knuckle.

**Step 19**

Once strut assembly is bottomed out in the knuckle, reinstall bolt and nut using 14mm Triple Square and 18mm Socket respectively. Torque to **70Nm + 90° turn**.

**Step 20**

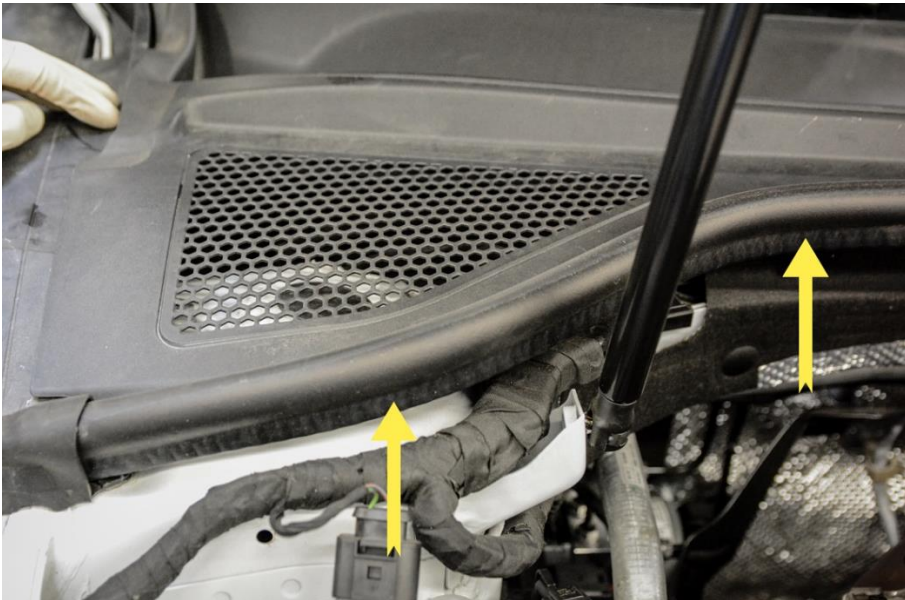
Using 13mm socket, torque upper 3 strut bolts to **30Nm**.



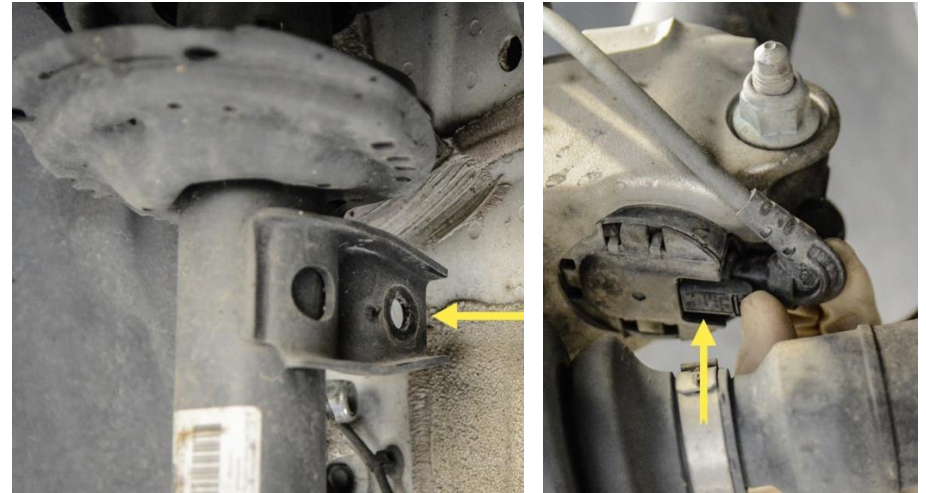
(MK8 VW GTI shown here)

Step 21

Reinstall dust shield and factory bolt using 10mm Socket.
Place weather stripping back on cowl cover.

**Step 22**

Reinstall sway bar end link to strut assembly. Torque to **65Nm**. Note: For cars with factory dynamic suspension, reconnect plastic clip on bottom of strut.

**Step 23**

Install front wheels and safely lower down from lift or jackstands. Torque lug bolts to **122Nm**.



Step 24

Get out and drive! Enjoy your improved response and handling from 034Motorsport Street Density Strut Mounts!

