

About This Guide

This Install Guide documents the installation process on a C7 Audi A6. There may be minor differences depending on specific vehicle, market, options, etc.

Getting Started

Confirm you have received all the parts included with your purchase by reading the complete guide, if there are missing components,



Assembly Steps

Step 1

Using a 3mm Allen and an 8mm socket, secure the mounting bracket to the heat shield with the mounting buttons and provided hardware.



Step 2

Using a 4mm Allen and an 8mm socket, attach the SAI adapter to the heat shield.



Step 3

Attach the SAI filter to the inside of the adapter and tighten the hose clamp with a flathead screwdriver.

**Step 4**

Insert the intake hose into the heat shield. Attach appropriate hose clamps on both ends.

**Step 5**

Install metal support ring into intake hose and secure the support ring to the bracket using a 5mm Allen and a 10mm wrench. Be sure to attach the support ring to the back of the mounting bracket.



Step 6

Attach the air filter to the open end of the support ring and secure the hose clamp using a flathead screwdriver.



Install Steps

Step 1

Open your hood to access the intake system.



Step 2

Using a trim tool, remove the clips securing the radiator cover.



Step 3

Remove the radiator cover and set it aside for now.



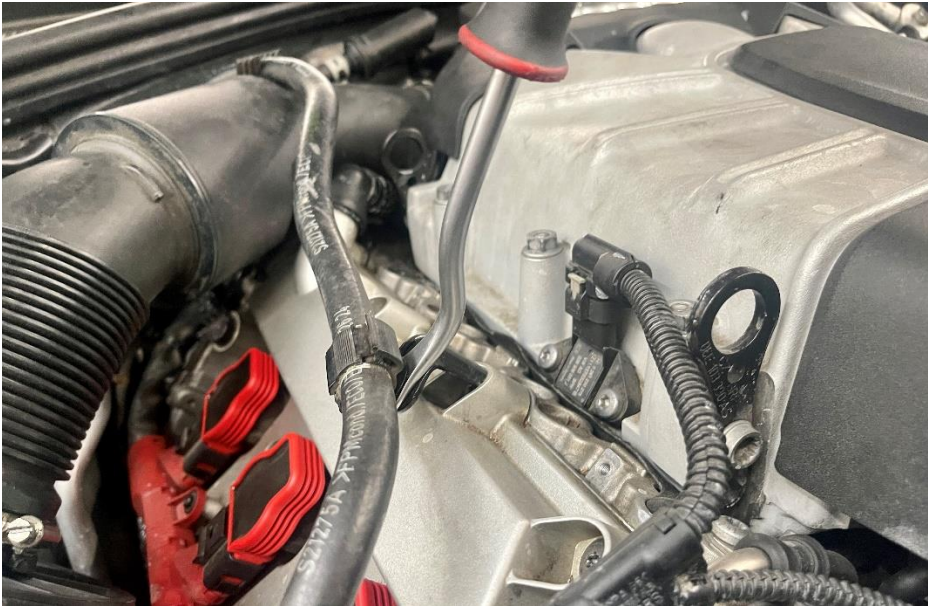
Step 4

Remove the two T25 screws from the stock inlet scoop and remove the scoop from the OE air box.



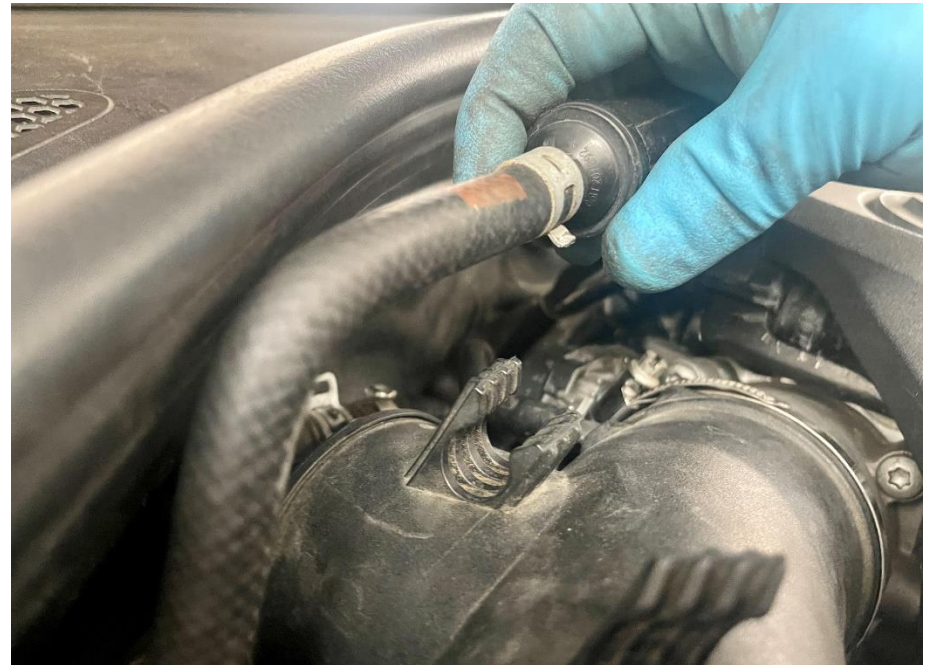
Step 5

Remove the fuel line clip from the valve cover.



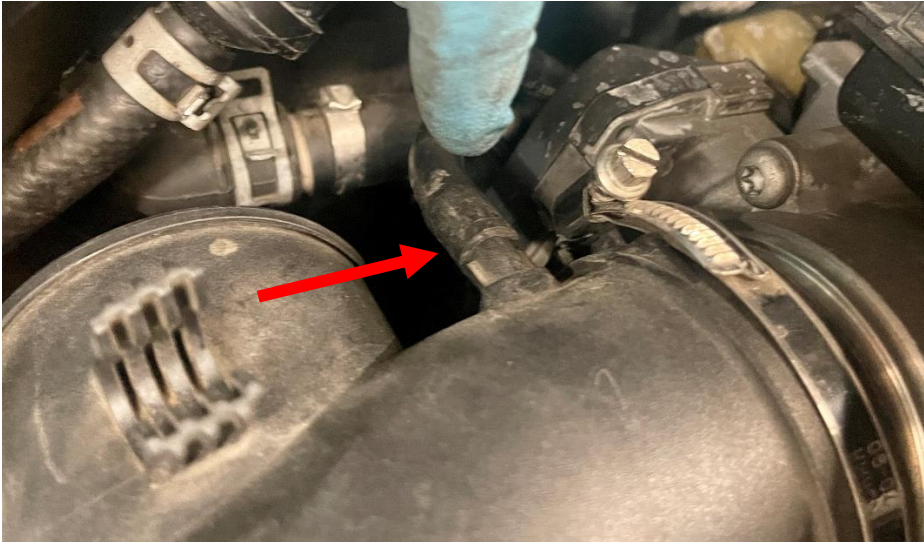
Step 6

Unclip the fuel lines from the intake hose.



Step 7

Disconnect the vacuum line from the back of the intake hose.

**Step 8**

Using a flathead screwdriver, loosen the hose clamp near the throttle body.

**Step 9**

Separate the intake hose from the throttle body.

**Step 10**

Separate the intake air duct from the airbox.



Step 11

Lift the airbox up, off the mounts, to access the SAI fitting. Squeeze the tabs and pull downwards to disconnect the secondary air injection hose.



Step 12

Remove the airbox from the vehicle.



Step 13

Carefully turn the SAI fitting 90° clockwise.



Step 14

Install assembled shield into the car.



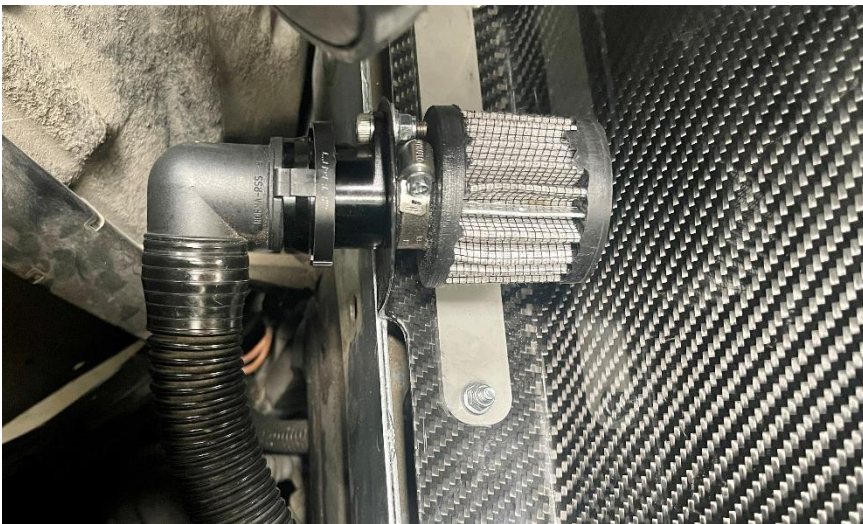
Step 15

Attach the intake hose to the throttle body and tighten the hose clamp.



Step 16

Attach the SAI fitting to the adapter.



Step 17

Using a T25 Torx bit, secure the heat shield to the radiator support using the intake air duct hardware.



Step 18

Attach the fuel line clip back to the valve cover.



Step 19

Reinstall your radiator cover by sliding the tabs on the front in and then install the clips.



Step 20

Attach the vacuum line to the intake hose.

Step 21

Breathe easy, knowing that your car now breathes easier than you ever will! After taking in how good the new carbon looks under the hood, gently close the hood and enjoy your power gains!

