

[F3X BMW HFC Downpipe Set](#)**034 MOTOR SPORT**

034Motorsport's new High-Flow Cat Downpipe set is a direct bolt-in replacement, made of 304 Stainless Steel. Sporting CNC-machined flanges, and TIG welded with a nitrogen back purge to ensure no leaking seams. Enjoy quicker turbo spooling that results in an increase in horsepower, torque, and enhanced exhaust tone, despite the addition of a Euro 3 Racing Catalytic Converter.

Installation Spiciness Rating: MEDIUM



Installation of your 034Motorsport High Flow Cat Downpipe set is a straightforward process that will take approximately 4 hours to complete.

Supplied Parts:

- (1x) High Flow Downpipe
- (1x) Downpipe gasket

Tools Needed:

- 22mm Oxygen sensor tool or wrench
- 13mm Socket
- Flathead Screwdriver

About This Guide

This Install Guide documents the installation process on a BMW F3X. There may be minor differences depending on specific vehicle, market, options, etc.

Getting Started

Confirm you have received all the parts included with your purchase by reading the complete guide, if there are missing components, please contact:

Install Steps

Step 1

Open your hood to access the engine.



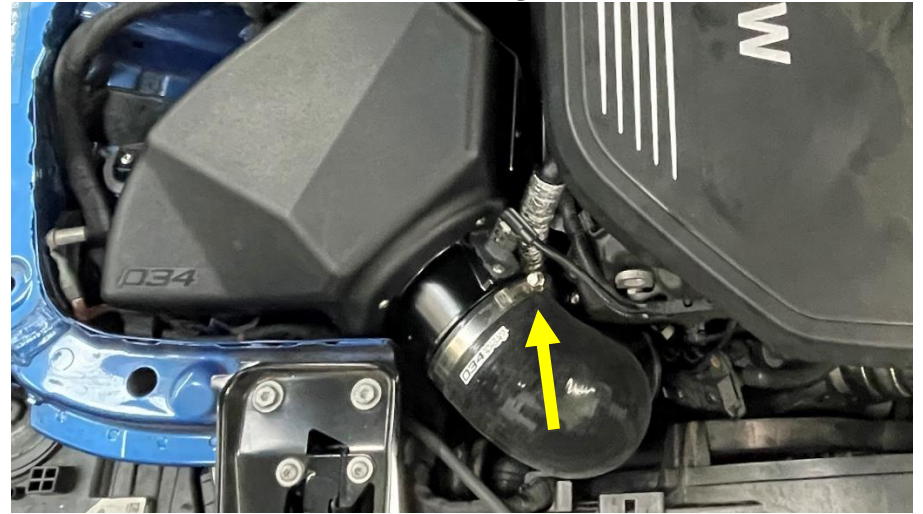
Step 2

Disconnect the MAF sensor from the intake.



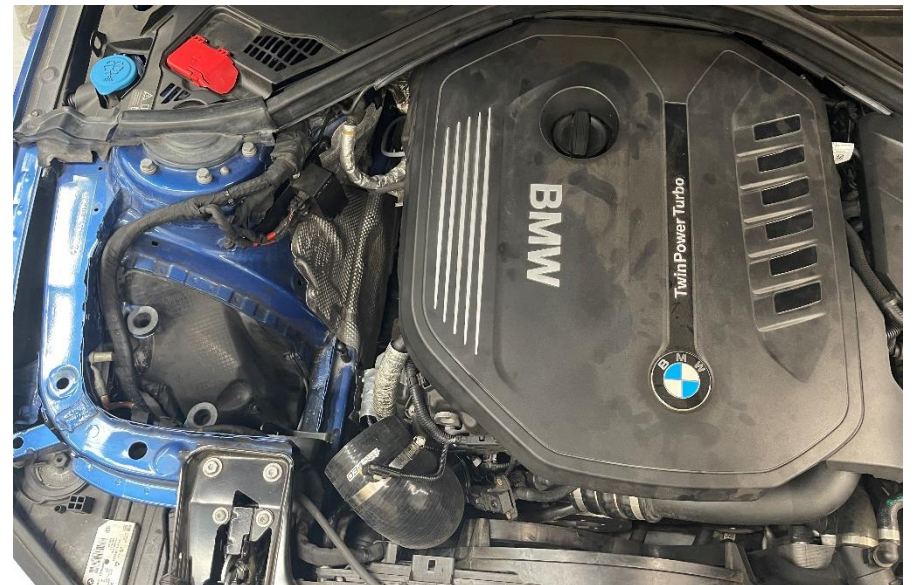
Step 3

Using a flathead screwdriver, loosen the hose clamp from the MAF housing/intake.



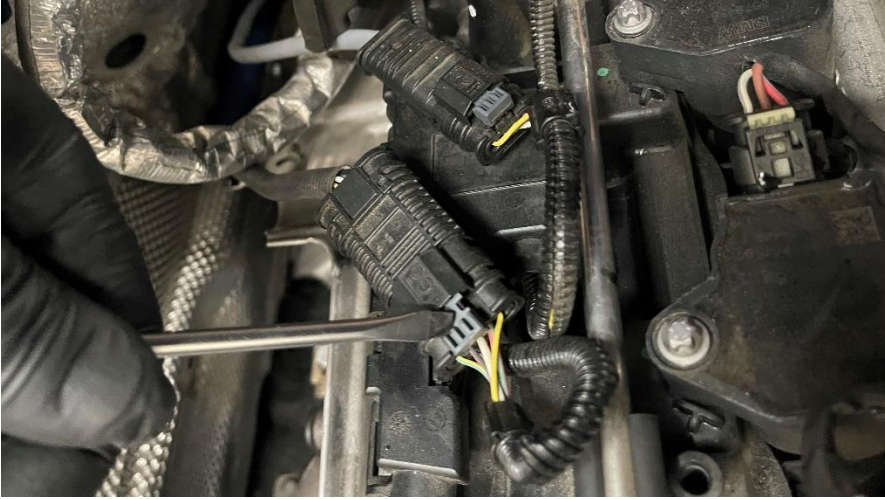
Step 4

Remove the airbox by firmly pulling up.



Step 5

Using a flathead screwdriver, disconnect the oxygen sensor connector.

**Step 6**

Using a 22mm oxygen sensor tool, remove the upper and lower sensors from the factory downpipe.

**Step 7**

Using a 13mm socket, loosen the v-band clamp from the downpipe/turbo interface.

**Step 8**

Using a 13mm socket, remove the nuts from the downpipe mounting brace.



Step 9

Lift the car to access the underside.

**Step 10**

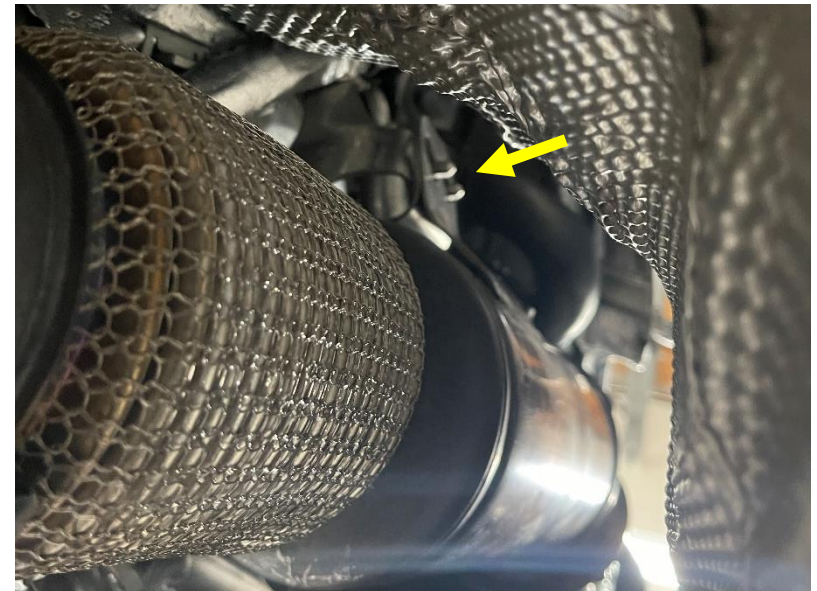
Using a 13mm socket, remove the hardware from the exhaust hanger.

**Step 11**

Using a 13mm socket, loosen the exhaust clamp at the base of the downpipe.

**Step 12**

Slide the stock downpipe off of the mounting brace and remove it from under the car.



Step 13

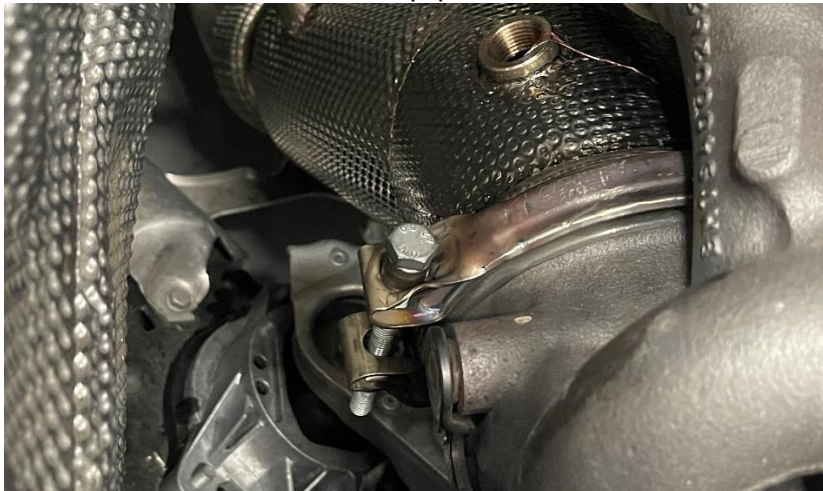
Install the 034 downpipe in the same location, securing it with the stock nuts.

**Step 14**

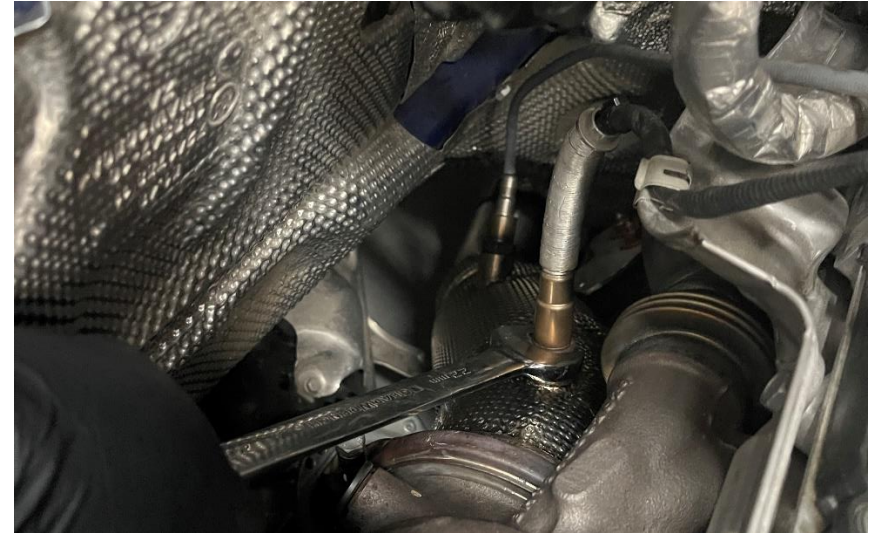
Lower the car back down.

Step 15

Using a 13mm socket, reinstall the factory v-band clamp to secure the downpipe to the turbo.

**Step 16**

Using a 22mm oxygen sensor tool, reinstall both sensors.

**Step 17**

Reconnect the oxygen sensor connector.



Step 18
Reinstall the engine cover.



Step 19
Reinstall the airbox.



Step 20
Reconnect the MAF sensor connector.



Step 21
Reconnect the intake hose to the MAF housing and secure it with the hose clamp.



Step 22

Lift the car again to button up the exhaust.

**Step 23**

Using a 13mm socket, secure the exhaust hanger back into place.

**Step 24**

Using a 13mm socket, secure the exhaust clamp back into place.

**Step 25**

Lower the car, again, and check that everything is secure and in its proper location. And you're done.

